

OLYMPUS®

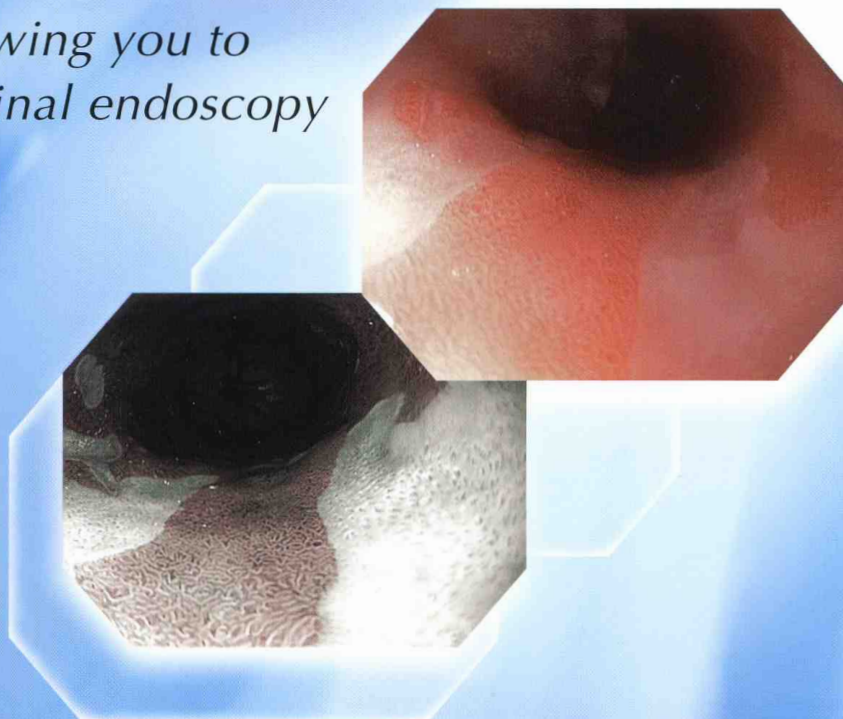
Your Vision, Our Future

EVIS EXERA II GASTROINTESTINAL VIDEOSCOPE

OLYMPUS GIF TYPE H180

EVIS
EXERA II

*High-performance HDTV imaging,
high-power Close Focus, and
Narrow Band Imaging allowing you to
redefine upper gastrointestinal endoscopy*



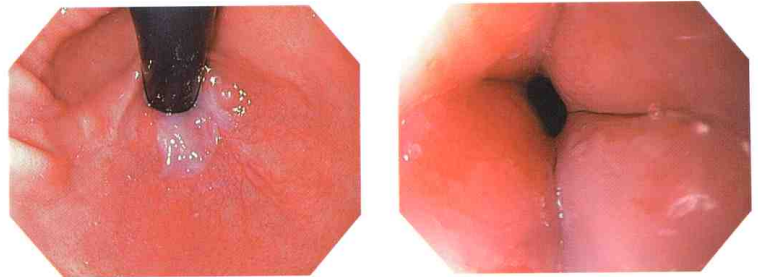
HDTV and Close Focus combined with Narrow Band Imaging achieve a new standard in observation for upper gastrointestinal endoscopy

Simply put, the GIF-H180 delivers the best possible HDTV image quality. With resolution that far exceeds conventional video, and the added feature of Narrow Band Imaging, the GIF-H180 improves diagnostic imaging, enabling you to confidently observe capillaries and delicate mucosal tissue. With an improved Close Focus optical system, the need for electronic magnification is eliminated. And with a slim outer diameter, this scope maintains the handling characteristics you are currently used to with standard endoscopes.



New generation HDTV images

With its built-in HDTV-compatible CCD, the GIF-H180 captures clear, life-like images with precise details and accurate color that can be delivered to the CV-180 processor and displayed on the OEV191H LCD monitor. With HDTV's ability to visualize details of the upper gastrointestinal tract, your diagnostic performance should be improved.



What is HDTV?

HDTV — or high-definition television — offers image quality comparable to film and all the convenience and flexibility of conventional video. With 1,080 effective scanning lines of picture information, compared to 480 for NTSC and 576 for PAL, HDTV delivers picture quality that is more than twice as good as conventional TV. Increased pixel density produces a smooth clear picture whose remarkable detail and natural colors are unmarred by the pixelation seen in lower-resolution images. This superb quality and realism makes HDTV ideal for demanding imaging applications such as endoscopy.



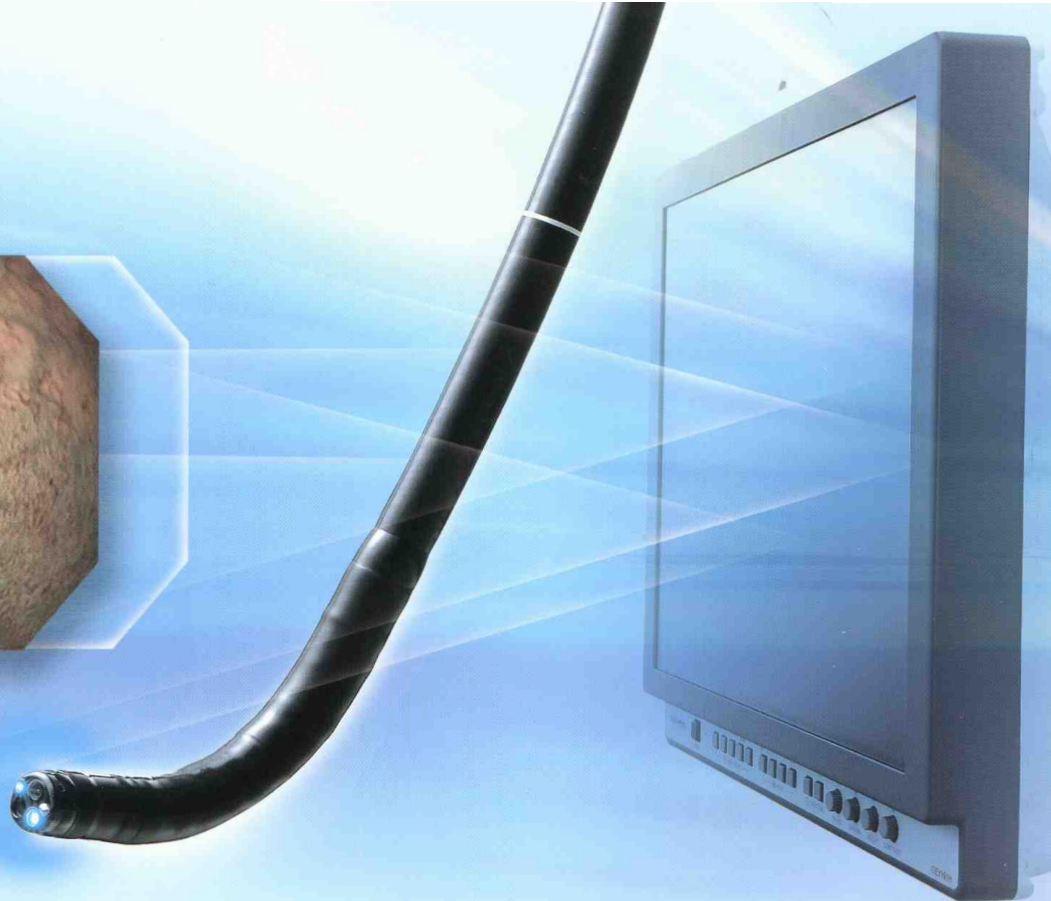
Conventional TV image



HDTV image

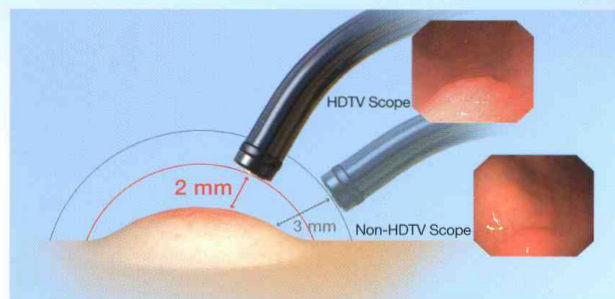


Note: The images shown above are simulated pictures.



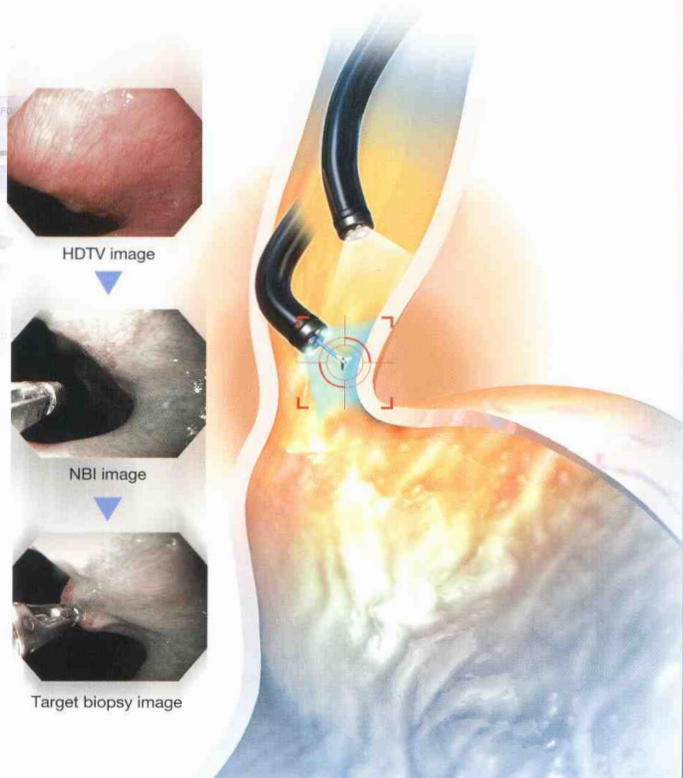
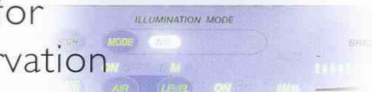
Close Focus for detailed observation

Now you can obtain an enlarged, close-up image simply by moving the scope tip close to the site (up to 2 mm). The combination of the HDTV-compatible CCD's enhanced imaging with the optical system's extended depth of field allows focus to remain clear and sharp so you'll be able to confidently examine the site. Since no magnification is used, details are clearer and more accurate.



Narrow Band Imaging for detailed mucosal observation

In the upper gastrointestinal tract, Narrow Band Imaging (or NBI) helps in the observation of mucosal morphology in the distal esophagus. The combination of NBI and HDTV image quality might make possible target biopsies in patients with Barrett's esophagus.



Main Features

- Narrow Band Imaging combined with high-resolution HDTV imaging and Close Focus enhance observation of the mucosa and capillaries.
- Close Focus for detailed observation without electronic magnification.
- Slim distal end and insertion tube diameters of 9.8 mm enable improved insertion capability.
- A wide range of instruments can be used with the generous 2.8 mm diameter channel.
- Four-way angulation (210° up, 90° down, and 100° right/left) enables comprehensive examination of the upper gastrointestinal tract.
- Extra-wide 140° field of view enables observation of a wide area.
- Ergonomically designed grip enhances scope maneuverability while easy-to-access knobs and user-selectable switches improve operability.
- Compatible with the CV-180.

- Scope ID function stores individual scope information in the built-in memory chip and displays it on the monitor, facilitating endoscopy suite management and making the scope ready for next-generation system expansion.

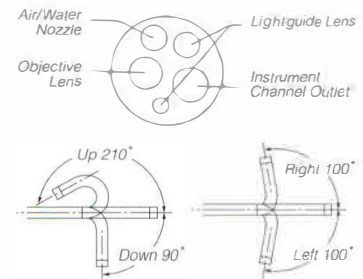


Start-up display



Specifications

Optical System	Field of view	140°
	Direction of view	Forward viewing
	Depth of field	2 to 100 mm
Distal End	Outer diameter	9.8 mm
Insertion Tube	Outer diameter	9.8 mm
Bending Section	Angulation range	Up 210°, Down 90°, Right 100°, Left 100°
Working Length		1030 mm
Total Length		1345 mm
Instrument Channel	Inner diameter	2.8 mm
	Minimum visible distance	3 mm from the distal end
	Endotherapy accessory entrance/exit position in field of view	



Medic-Ally International LLC
sales@medic-ally.net
949-877-9141

Specifications, design and accessories are subject to change without any notice or obligation on the part of the manufacturer.

OLYMPUS

www.olympus.com

OLYMPUS MEDICAL SYSTEMS CORP.
Shinjuku Monolith, 3-1 Nishi-Shinjuku 2-chome, Shinjuku-ku, Tokyo 163-0914, Japan
OLYMPUS MEDICAL SYSTEMS EUROPA GMBH
Postfach 10 49 08, 20034 Hamburg / Wendenstrasse 14-18, 20097 Hamburg, Germany
OLYMPUS AMERICA INC.
3500 Corporate Parkway, P.O. Box 610, Center Valley, PA 18034-0610, U.S.A.
OLYMPUS LATIN AMERICA, INC.
5501 Blue Lagoon Drive, Suite 200 Miami, Florida 33126-2097, U.S.A.
OLYMPUS KEYMED GROUP LTD.
Keymed House, Stock Road, Southend-on-Sea, Essex SS2 5QH, England
OLYMPUS SINGAPORE PTE LTD.
491B River Valley Road #12-01/04, Valley Point Office Tower, Singapore 248373

OLYMPUS HONG KONG AND CHINA LIMITED
L43, Office Tower, Langham Place, 8 Argyle Street, Mongkok, Kowloon, Hong Kong
OLYMPUS (BEIJING) SALES & SERVICE CO., LTD.
Room 1202, NCI Tower, A12 Jianguomenwai Avenue Chaoyang District Beijing, 100022, China
OLYMPUS MOSCOW LIMITED LIABILITY COMPANY
117071, Moscow, Malaya Kaluzhskaya 19, bld. 1, fl. 2, Russia
OLYMPUS AUSTRALIA PTY LTD
31 Gibby Road, Mount Waverley, VIC., 3149, Australia
OLYMPUS KOREA CO., LTD.
4F, 5F, Gyeongnam Bldg., 157-27, Samseong-dong, Gangnamku, Seoul, Korea