

OLYMPUS®

Your Vision, Our Future

EVIS EXERA III

EVIS EXERA III COLONOVideoscope

CF-HQ190L/I

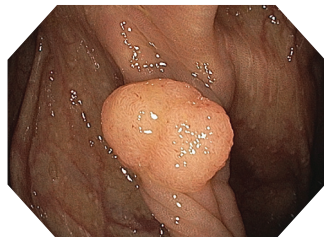
Amazing image quality and handling for colonoscopy



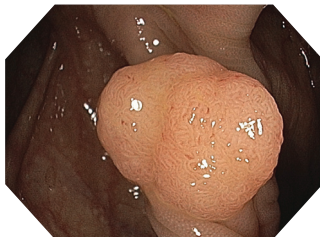


Dual Focus

Dual Focus, a unique Olympus optical innovation, allows the user to select between two focus settings. With the simple push of a scope button, the desired depth of field for observation can be optimized to either the near field or normal field.



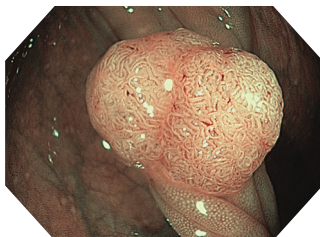
Normal-focus mode



Near-focus mode

NBI (Narrow Band Imaging)

NBI in EVIS EXERA III 190 Series scopes provides twice the viewable distance of EVIS EXERA II 180 Series scopes.



RIT (Responsive Insertion Technology)

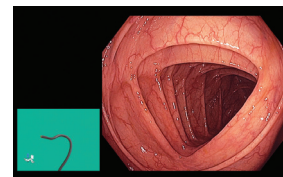
RIT combines three proprietary insertion tube technologies: HFT (High Force Transmission), PB (Passive Bending), and variable stiffness. These technologies are designed to facilitate complete colonoscopies by improving scope handling, insertability, and ergonomics. PB helps EVIS EXERA III 190 Series scopes move through acute bends in the colon. HFT provides improved operator control for both pushing and twisting maneuvers. Variable stiffness allows the physician to adjust the rigidity of Olympus scopes as needed by simply turning an adjustment ring on the scope's control section.

Enhanced Image Quality

An enhanced level of resolving power is achieved owing to a new optical system. Significantly less halation and noise is visible on screen. Improved optics, a brighter image, increased contrast, reduced noise, and reduced halation are the result of a new CCD available in the EVIS EXERA III, providing superior image quality even during electronic zoom.

ScopeGuide

ScopeGuide is an integrated technology in EVIS EXERA III 190 Series HQ colonoscopes. ScopeGuide provides real-time 3D visualization of scope position and configuration. This new level of visualization provides physicians with the ability to recognize loops as they form, potentially leading to shorter insertion time and less patient discomfort.



Waterproof One-touch Connector

A new connector design minimizes the effort required for setup prior to and in between cases. In addition, it is fully submersible and eliminates the need for a water-resistant cap and the associated risk of an expensive repair due to accidental immersion.



Optical System	Field of view	Normal 170° Near 160°
	Direction of view	Forward viewing
	Depth of field	Normal 5-100 mm Near 2-6 mm
Insertion Section	Distal end outer diameter	13.2 mm
	Distal end enlarged	
	Insertion tube outer diameter	12.8 mm
	Working length	L: 1680 mm I: 1330 mm

Instrument Channel	Channel inner diameter	3.7 mm
	Minimum visible distance	4.0 mm (Normal) from the distal end
	Direction from which endotherapy accessories enter and exit the endoscopic image	
Bending Section	Angulation range	Up 180°
		Down 180°
		Right 160°
		Left 160°
Total Length	L: 2005 mm I: 1655 mm	
Compatible EVIS EXERA System	Video System Center OLYMPUS CV-190 Xenon Light Source OLYMPUS CLV-190	

Image courtesy of Roy Soetikno, MD.

Specifications, design, and accessories are subject to change without any notice or obligation on the part of the manufacturer. Olympus is a registered trademark of Olympus Corporation, Olympus America Inc., and/or their affiliates.